



December 1996

EMBARGO: 11:30 AM (CANBERRA TIME) WED 12 FEB 1997

# **Lease Finance**

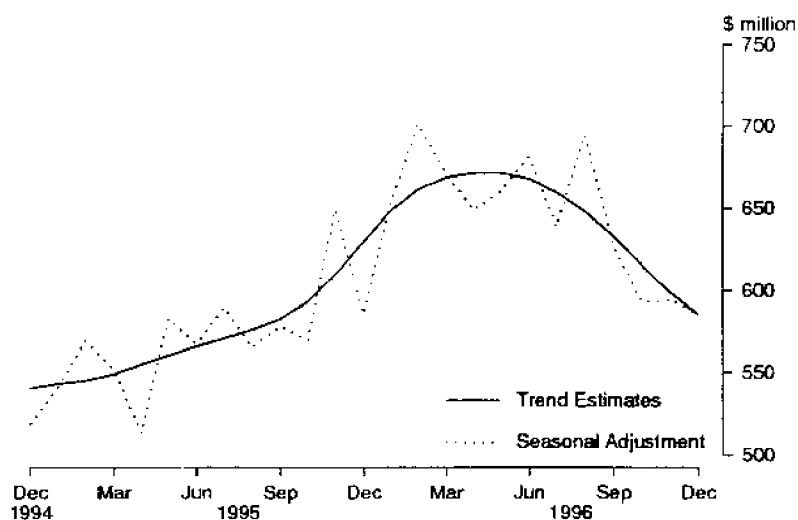
## **Australia**

## **Data Report**

© Commonwealth of Australia 1997

## MAIN FEATURES

## LEASE FINANCE, AUSTRALIA, DECEMBER 1994 – DECEMBER 1996



**1** The provisional trend estimate for lease finance commitments made by significant lenders in December 1996 was \$585.2 million, a decrease of \$14.3 million (2.4%) on November 1996 and a decrease of \$44.8 million (7.1%) on December 1995.

**2** Seasonally adjusted, lease finance commitments were \$585.6 million in December 1996, a decrease of \$9.0 million (1.5%) on November 1996 and a decrease of \$0.6 million (0.1%) on December 1995.

**3** In original terms lease finance commitments in December 1996 were \$631.2 million, an increase of \$65.6 million (11.6%) on November 1996 but a decrease of \$1.9 million (0.3%) on December 1995.

### INQUIRIES

- for further information about these and related statistics, contact Phillip Lui on (02) 9268 4263.
- for information about other ABS statistics and services please refer to the back cover.

**LEASE FINANCE COMMITMENTS: SUMMARY OF MOVEMENTS IN MAJOR AGGREGATES: Original, seasonally adjusted and trend estimates, DECEMBER 1996.**

Month	Value			Change from previous month			Change from corresponding month of previous year		
	Original	Seasonally adjusted	Trend	Original	Seasonally adjusted	Trend	Original	Seasonally adjusted	Trend
	\$ million	\$ million	\$ million	%	%	%	%	%	%
<b>1995 —</b>									
October	541.9	569.8	593.7	-4.4	-1.6	1.8	13.5	6.8	11.0
November	616.0	649.5	610.1	13.7	14.0	2.8	11.3	16.9	13.6
December	633.1	586.2	630.0	2.8	-9.7	3.3	11.2	13.0	16.6
<b>1996 —</b>									
January	478.3	652.9	648.6	-24.5	11.4	2.9	28.6	20.8	19.4
February	595.3	700.9	661.6	24.5	7.4	2.0	24.8	23.0	21.3
March	672.8	671.4	668.5	13.0	-4.2	1.0	13.1	21.6	21.8
April	581.5	648.7	671.4	-13.6	-3.4	0.4	36.0	26.4	20.9
May	740.6	660.7	671.2	27.4	1.9	0.0	14.1	13.3	19.7
June	914.1	681.2	667.7	23.4	3.1	-0.5	11.1	20.0	17.9
July	755.0	638.9	659.5	-17.4	-6.2	-1.2	23.5	8.2	15.4
August	636.8	694.8	648.4	-15.7	8.7	-1.7	16.2	22.9	12.5
September	577.7	627.5	633.1	-9.3	-9.7	-2.4	1.9	8.4	8.6
October	596.9	593.7	615.8	3.3	-5.4	-2.7	10.2	4.2	3.7
November	565.6	594.6	599.5	-5.2	0.2	-2.7	-8.2	-8.4	-1.7
December	631.2	585.6	585.2	11.6	-1.5	-2.4	-0.3	-0.1	-7.1

TABLE 1 — VALUE OF GOODS UNDER NEW FINANCE LEASE COMMITMENTS(a) — DECEMBER 1996  
(\$ million)

Type of goods	Type of lessor				Total
	All banks	Finance companies	Money market corporations	General financiers	
AUSTRALIA					
Motor vehicles —					
Motor cars					
New					
Not subject to depreciation limit	56.7	92.7	6.5	12.9	168.8
Subject to depreciation limit	6.6	3.1	—	3.2	12.9
Used					
Not subject to depreciation limit	17.6	29.3	0.3	1.2	48.4
Subject to depreciation limit	2.7	0.9	—	0.8	4.4
Light trucks					
New	10.6	17.4	0.1	0.1	28.1
Used	3.2	5.1	—	—	8.3
Heavy trucks					
New	6.3	18.9	0.4	—	25.6
Used	2.2	8.7	—	0.2	11.2
Other motor vehicles					
Motor buses/coaches	2.6	4.3	—	—	7.0
Other	0.5	0.3	—	0.2	1.0
Trailers	2.3	6.4	—	—	8.7
Other transport equipment	4.9	3.1	—	—	8.0
Construction and earthmoving equipment	9.7	44.8	14.9	1.2	70.5
Manufacturing equipment	17.6	18.5	6.1	8.0	50.1
Agricultural machinery and equipment	10.7	8.2	0.5	4.9	24.3
Electronic data processing equipment	15.3	9.6	5.2	24.8	55.0
Office machines	6.4	5.2	8.6	22.8	43.0
Shop and office furniture, fittings and equipment	16.6	6.9	0.5	6.1	30.1
Other	16.8	5.1	1.3	2.7	25.9
<b>Total</b>	<b>209.2</b>	<b>288.7</b>	<b>44.3</b>	<b>89.1</b>	<b>631.2</b>
STATES(b)					
New South Wales	96.9	139.2	28.2	42.1	306.4
Victoria	40.3	45.2	15.9	26.2	127.5
Queensland	44.4	72.3	n.p.	n.p.	127.7
South Australia	4.2	12.7	—	2.3	19.2
Western Australia	18.1	12.9	0.1	5.0	36.1
Tasmania	0.4	1.9	n.p.	n.p.	4.1
Northern Territory	1.5	1.8	—	0.3	3.6
Australian Capital Territory	3.4	2.7	—	0.5	6.6

(a) Excludes leveraged leases. (b) From July 1996 Money market corporations and General financiers data is not available for publication for Queensland and Tasmania, but is included in totals where applicable.

TABLE 2 — VALUE OF GOODS UNDER NEW FINANCE LEASE COMMITMENTS(a) — ALL LESSORS

	Type of goods												Total motor vehicles \$m
	Motor cars and station wagons						Motor vehicles						
	Light trucks			Heavy trucks			Light trucks			Heavy trucks			
	New Number	\$m	Used Number	New Number	\$m	Used Number	New Number	\$m	Used Number	New Number	\$m	Used Number	
AUSTRALIA													
YEARS													
1993-1994	57,252	2,001.0	20,142	9,967	290.2	3,532	73.1	2,614	336.5	2,076	119.1	140.9	3,556.7
1994-1995	60,792	2,244.9	19,511	10,567	334.7	3,632	83.3	2,772	365.7	1,963	119.1	136.6	3,870.7
1995-1996	62,256	2,262.6	24,663	10,077	332.6	4,319	110.5	2,338	298.8	2,332	150.2	208.8	4,085.9
1995													
October	4,603	164.9	1,844	726	24.0	467	11.2	182	21.1	160	9.7	10.0	293.0
November	5,375	198.1	1,838	858	28.9	315	8.1	229	30.8	191	12.8	14.6	349.7
December	5,309	200.2	1,711	690	25.5	249	6.1	183	26.5	104	7.6	39.4	356.1
1996													
January	3,886	144.8	1,810	596	20.4	273	6.4	119	13.1	158	10.0	9.0	258.9
February	4,892	174.6	2,154	749	25.2	315	8.2	136	18.2	257	15.2	23.6	330.1
March	5,509	197.1	2,170	818	26.7	346	12.7	226	28.9	217	14.5	14.3	358.1
April	4,838	168.0	1,760	728	23.3	293	7.6	166	22.2	175	10.8	19.4	304.5
May	6,011	206.7	2,388	1,069	34.9	406	9.9	218	26.2	218	15.0	19.2	382.3
June	6,858	248.7	2,585	1,364	43.7	449	12.1	295	41.2	313	18.8	17.9	454.5
July	6,588	240.6	2,507	1,117	36.3	439	10.9	215	26.8	271	14.1	14.3	416.3
August	4,927	178.3	2,124	818	25.8	359	9.0	203	24.6	239	16.2	14.5	329.8
September	4,629	156.7	1,890	721	25.5	329	7.8	184	26.3	205	13.5	16.8	297.9
October	5,082	172.5	1,934	707	24.9	360	9.3	158	19.3	225	14.2	16.1	308.3
November	4,970	168.7	1,963	654	22.5	312	8.1	199	25.8	157	10.7	11.3	302.2
December	5,547	181.7	1,907	778	28.1	336	8.3	196	25.6	151	11.2	16.7	324.4
STATES — NOVEMBER 1996													
NSW	2,362	80.4	903	230	8.4	145	4.3	73	9.6	59	3.9	4.5	136.1
Vic.	993	33.2	322	82	3.3	15	0.3	40	6.1	16	1.5	2.1	57.2
Qld	1,117	39.1	495	276	8.6	127	3.0	62	7.2	62	3.8	3.0	78.2
SA	148	4.9	105	10	0.2	3	0.1	8	1.0	5	0.3	0.1	9.1
WA	247	7.4	92	39	1.4	10	0.4	9	1.2	10	0.7	1.0	14.6
Tas.	17	0.6	12	2	0.1	—	—	1	0.1	2	0.2	—	1.3
NT	23	0.9	18	7	0.2	12	0.1	3	0.2	2	0.2	0.1	2.3
ACT	63	2.3	16	8	0.3	—	—	3	0.5	1	—	—	3.5
STATES — DECEMBER 1996													
NSW	2,608	84.3	858	275	9.8	125	3.0	69	8.6	40	3.0	7.0	139.5
Vic.	1,200	39.3	333	134	4.7	34	0.8	61	8.9	27	1.5	4.0	68.0
Qld	1,127	39.3	476	305	11.1	140	3.6	47	5.8	51	4.5	4.4	81.8
SA	155	5.4	95	16	0.5	11	0.3	12	1.6	20	1.6	0.1	12.0
WA	317	8.8	86	29	1.4	19	0.5	7	0.8	11	0.5	0.7	15.5
Tas.	45	1.5	16	4	0.1	—	—	—	—	2	0.2	—	2.2
NT	17	0.6	18	6	0.2	2	—	—	—	—	—	—	1.4
ACT	78	2.5	25	9	0.4	5	0.1	—	—	—	—	—	4.0

(a) Excludes leveraged leases.

TABLE 2—VALUE OF GOODS UNDER NEW FINANCE LEASE COMMITMENTS(a)—ALL LESSORS—continued  
(\$ million)

YEARS	Type of goods							Total finance lease commitments			Commitments not drawn at end of period	
	Other transport equipment	Construction and earthmoving equipment	Agricultural and machinery equipment	Manufacturing equipment	Electronic data processing equipment	Office machines	Shop and office furniture, fittings and equipment	Original	Seasonally Adjusted	Trend Estimates		
												Other
AUSTRALIA												
1993-1994	98.3	279.4	238.5	332.3	465.9	339.6	233.7	301.9	5,846.2	..	..	442.0
1994-1995	121.4	434.1	243.5	425.9	622.1	366.0	250.6	238.0	6,572.4	..	..	495.5
1995-1996	129.3	744.8	396.0	482.3	659.7	461.7	260.4	279.7	7,499.7	..	..	475.0
1995												
October	9.5	50.1	19.5	32.7	42.9	34.1	20.8	39.5	541.9	569.8	593.7	452.9
November	16.7	49.2	15.7	40.1	61.2	35.1	21.9	26.6	616.0	649.5	610.1	449.4
December	10.0	57.1	23.0	16.3	79.5	30.1	26.6	14.4	633.1	586.2	630.0	459.7
1996												
January	4.5	64.2	18.9	29.2	33.1	34.2	14.3	21.2	478.3	652.9	648.6	446.2
February	11.0	65.6	24.6	27.3	59.2	38.4	18.8	20.3	595.3	700.9	661.6	456.5
March	12.6	71.5	46.7	38.6	59.8	40.5	19.9	25.1	672.8	671.4	658.5	468.2
April	10.5	59.4	41.0	41.2	47.7	34.5	21.7	20.9	581.5	648.7	671.4	447.9
May	14.2	88.5	55.5	53.5	51.0	46.0	20.8	28.9	740.6	660.7	671.2	464.3
June	14.8	82.3	92.8	79.9	75.3	52.2	34.7	27.6	681.2	681.2	667.7	475.0
July	19.2	86.0	41.3	43.7	46.5	45.0	21.9	35.0	755.0	638.9	659.5	455.3
August	9.2	72.0	19.3	51.5	56.3	37.9	18.9	37.9	636.8	694.8	648.4	443.4
September	12.0	70.7	24.1	30.7	43.3	50.7	19.4	29.0	577.7	627.5	633.1	446.7
October	10.2	58.4	33.0	41.6	56.9	38.6	24.5	25.4	596.9	593.7	615.8	448.6
November	8.3	68.1	28.7	34.8	40.0	40.7	19.7	23.2	565.6	594.6	599.5	406.7
December	8.0	70.5	24.3	50.1	55.0	43.0	30.1	25.9	631.2	585.6	585.2	324.1
STATES - NOVEMBER 1996												
NSW	3.9	48.5	9.5	12.8	17.7	20.3	5.6	5.3	259.7	n.a.	n.a.	193.5
Vic.	1.4	4.2	2.8	11.5	13.1	12.7	4.1	8.6	115.5	n.a.	n.a.	115.5
Qld	1.7	9.9	10.7	7.7	4.1	4.8	5.2	4.7	127.0	n.a.	n.a.	70.0
SA	0.5	0.7	0.7	0.9	2.1	0.5	0.6	2.6	17.7	n.a.	n.a.	6.6
WA	0.7	4.5	4.2	1.5	2.2	1.4	3.9	0.6	33.6	n.a.	n.a.	18.7
Tas.	---	---	0.1	0.2	0.2	---	---	0.6	2.4	n.a.	n.a.	0.1
NT	0.1	0.1	0.2	0.2	0.2	---	---	0.5	3.4	n.a.	n.a.	0.4
ACT	---	0.2	0.6	0.1	0.4	0.9	0.2	0.4	6.2	n.a.	n.a.	1.9
STATES - DECEMBER 1996												
NSW	3.8	56.1	9.6	20.3	29.3	21.3	14.4	12.0	306.4	n.a.	n.a.	157.6
Vic.	1.4	4.3	2.1	14.7	13.1	11.9	5.6	6.4	127.5	n.a.	n.a.	74.0
Qld	1.6	6.7	9.9	5.9	5.4	6.2	6.7	3.5	127.7	n.a.	n.a.	67.2
SA	0.1	1.0	0.5	0.9	1.4	1.1	0.9	1.3	19.2	n.a.	n.a.	5.7
WA	0.5	2.0	1.9	7.7	4.3	2.0	1.0	1.3	36.1	n.a.	n.a.	17.1
Tas.	---	0.1	---	0.2	0.8	0.1	0.1	0.5	4.1	n.a.	n.a.	0.1
NT	---	0.2	---	0.2	0.5	---	1.2	3.6	3.6	n.a.	n.a.	0.1
ACT	0.5	0.2	0.3	0.2	0.2	0.3	0.2	0.6	6.6	n.a.	n.a.	2.1

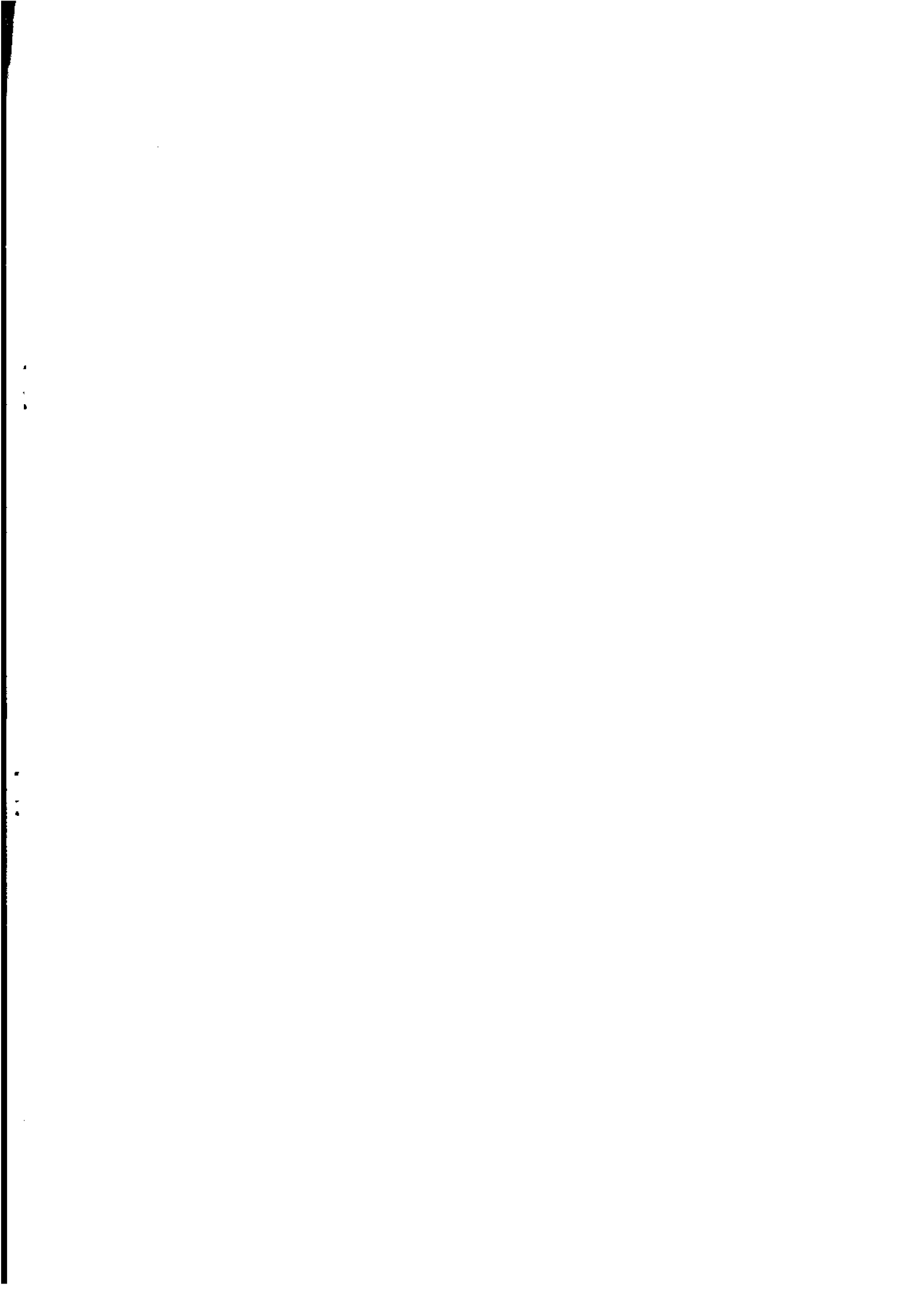
(a) Excludes leveraged leases.

TABLE 3 — VALUE OF GOODS UNDER NEW FINANCE LEASE COMMITMENTS(a) BY INDUSTRY OF LESSEE — ALL LESSORS  
(\$ million)

YEARS	Agriculture, forestry, fishing and hunting	Mining	Manufacturing	Construction	Wholesale trade	Retail trade	Transport and storage	Finance, investment and insurance	Property and business services	Recreation and other services	Public administration	Community services	Other industries	Total
1993-1994	452.7	131.2	668.0	463.8	287.2	958.6	667.8	251.3	772.4	303.0	100.8	372.4	417.0	5,846.2
1994-1995	441.3	159.2	778.1	513.5	297.7	1,267.9	714.9	268.5	846.6	394.9	78.0	397.6	414.3	6,572.4
1995-1996	615.6	177.6	854.6	833.9	325.3	1,128.5	845.4	257.0	923.8	348.3	107.2	376.1	706.4	7,499.7
1996	33.9	7.1	60.5	67.3	20.4	87.9	51.3	16.2	91.8	29.0	5.6	26.9	44.0	541.9
October	38.7	12.4	78.6	69.3	25.1	93.2	74.8	23.6	72.9	31.2	4.8	31.9	59.5	616.0
November	44.3	10.1	70.0	68.3	42.7	108.4	76.6	20.8	65.7	28.6	5.1	29.6	62.9	633.1
1996	31.9	15.6	50.6	67.1	18.7	71.4	47.7	14.0	57.1	21.5	5.3	25.8	51.4	478.3
January	43.9	11.2	58.5	71.8	26.3	85.0	68.0	26.7	68.4	30.4	9.4	33.5	62.2	595.3
February	65.0	10.4	71.6	80.1	28.0	93.6	85.6	17.9	87.5	25.0	8.7	33.5	66.0	672.8
March	57.4	13.9	60.5	71.4	26.5	76.5	59.2	26.1	75.5	22.3	10.0	26.8	55.3	581.5
April	74.1	32.9	80.4	83.8	31.7	102.4	80.6	21.8	84.3	29.3	17.0	33.1	69.4	740.6
May	121.9	32.0	101.8	106.1	34.8	136.0	94.8	28.6	96.3	33.6	21.1	38.0	69.1	914.1
June	62.2	14.5	80.8	102.2	33.3	127.6	77.1	21.6	88.6	29.8	15.1	28.8	73.5	755.0
July	36.4	21.6	78.5	83.7	27.2	80.6	65.5	29.4	82.2	25.4	16.9	29.8	59.5	636.8
August	37.6	22.7	65.5	79.4	18.9	69.7	69.0	24.2	73.8	24.1	14.9	27.4	50.5	577.7
September	47.2	14.4	67.9	71.1	20.8	87.4	65.2	20.0	81.5	22.6	19.0	30.0	50.0	596.9
October	44.2	13.4	66.3	81.0	25.2	78.7	65.7	16.5	70.6	23.0	11.3	26.1	43.5	565.6
November	44.0	25.9	66.0	80.4	22.6	76.3	72.0	15.0	94.8	30.4	20.7	30.3	52.8	631.2
December														
STATES — NOVEMBER 1996														
NSW	13.8	3.0	22.7	53.5	12.8	40.3	27.7	8.4	29.7	10.2	5.0	9.8	22.8	259.7
Vic.	5.8	3.5	23.9	3.9	6.0	15.7	16.0	3.3	17.3	2.7	2.7	6.8	7.7	115.5
Qld	16.0	1.4	13.5	17.6	4.3	15.8	14.2	3.0	19.1	5.4	2.1	6.9	7.8	127.0
SA	1.1	0.7	2.0	2.4	0.5	1.8	3.9	0.2	1.0	1.3	0.2	1.2	1.5	17.7
WA	6.0	4.7	3.7	2.9	0.8	3.6	2.3	1.0	2.0	2.3	0.7	1.0	2.5	33.6
Tas.	0.6	---	0.1	0.2	0.2	0.3	0.5	0.1	0.2	0.1	---	---	0.2	2.4
N.T.	0.6	---	0.1	0.1	0.1	0.6	0.8	---	0.3	0.2	0.1	0.1	0.2	3.4
ACT	0.5	0.1	0.3	0.4	0.4	0.5	0.4	0.4	1.0	0.7	0.6	0.3	0.8	6.2
STATES — DECEMBER 1996														
NSW	15.0	15.4	23.6	56.6	11.2	39.3	28.2	9.8	46.6	13.9	7.9	11.3	27.6	306.4
Vic.	5.4	3.1	23.2	5.7	3.9	14.8	18.3	1.8	20.6	3.6	9.5	8.9	8.7	127.5
Qld	17.6	1.3	12.3	14.1	4.9	13.4	16.1	2.6	21.7	6.2	1.3	7.8	8.5	127.7
SA	1.0	0.9	1.8	0.8	1.6	2.3	4.0	0.2	1.7	1.5	0.5	0.8	2.1	19.2
WA	3.9	4.7	4.3	2.0	0.6	3.7	3.3	0.5	2.4	3.8	0.9	1.0	5.0	36.1
Tas.	0.7	---	0.2	0.4	---	0.4	1.1	---	0.7	0.1	0.2	0.1	0.3	4.1
N.T.	---	---	---	0.2	0.2	1.7	0.4	---	0.2	0.4	0.2	0.2	0.3	3.6
ACT	0.4	0.5	0.6	0.8	0.1	0.7	0.7	---	0.9	0.8	0.3	0.4	0.4	6.6

(a) Excludes leveraged leases.







## For more information . . .

The ABS publishes a wide range of statistics and other information on Australia's economic and social conditions. Details of what is available in various publications and other products can be found in the ABS Catalogue of Publications and Products available from all ABS Offices.

### ABS Products and Services

Many standard products are available from ABS bookshops located in each State and Territory. In addition to these products, information tailored to the needs of clients can be obtained on a wide range of media by contacting your nearest ABS Office. The ABS also provides a Subscription Service for standard products and some tailored information services.

### National *Dial-a-Statistic* Line

0055 86 400

*Steadycorn P/L: premium rate 25c/21.4 secs.*

This number gives 24-hour access, 365 days a year, for a range of important economic statistics including the CPI.

### Internet

<http://www.abs.gov.au>

A wide range of ABS information is available via the Internet, with basic statistics available for each State, Territory and Australia. We also have Key National Indicators, ABS product release details and other information of general interest.

## Sales and Inquiries

Keylink STAT.INFO/ABS  
X.400 (C:Australia,PUB:Telememo,O:ABS,FN:STAT,SN:INFO)  
Internet stat.info@abs.telememo.au

National Mail Order Service (06) 252 5249  
Subscription Service 1800 02 0608

	Information Inquiries	Bookshop Sales
SYDNEY	(02) 9268 4611	9268 4620
MELBOURNE	(03) 9615 7755	9615 7755
BRISBANE	(07) 3222 6351	3222 6350
PERTH	(09) 360 5140	360 5307
ADELAIDE	(08) 8237 7100	8237 7582
HOBART	(03) 6220 5800	6205 800
CANBERRA	(06) 252 6627	207 0326
DARWIN	(08) 8943 2111	8943 2111

Information Services, ABS, PO Box 796, Sydney NSW 2001

